

MEK 1/2 Antibody

Product Description

This antibody was developed and affinity purified using a peptide based on human MEK1. This antibody was tested to be able to detect both human MEK1 and MEK2 using human cell lysates.

Species

Rabbit

Formulation

1000 µg/mL in TBS with 50% glycerol

Storage & Stability

Product is stable for several weeks at 4°C. For extended storage, store product at -20°C. Expiration date is one year from date of shipping if stored properly.

Immunogen

MEK1 peptide (210-255 aa) KLH conjugates
Protein code: Q02750

Purification

Affinity specific affinity chromatography

Specificity

Recognizes both MEK1 and MEK 2 , human and mouse

Applications

ELISA (>1:2000)

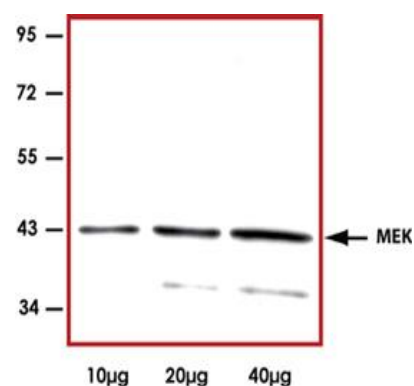
WB (>1:1000)

IP (5 µg/mg protein)

Catalog #: LAN2010

MEK1 is a member of the dual specificity protein kinase family that acts as a mitogen-activated protein kinase (MAPK) kinase. MEK1 lies upstream of MAPK/ERK and stimulates the enzymatic activity of MAPK/ERK upon a wide variety of extra- and intracellular signals. As an essential component of MAPK/ERK signal transduction pathway, MEK1 is involved in many cellular processes such as proliferation, differentiation, transcription regulation and development.

Sample Data



Representative western blot with anti-MEK1/2 (1:1000) using, from left to right, 10 µg, 20 µg and 40 µg of 293 cell lysate.

Scientific Description

For in vitro research use only. Not recommended or intended for diagnosis of diseases in humans or animals. Do not use in humans or in animals.

MATERIAL SAFETY DATA SHEET

Article 1 - Product Identification and Use

Product Name: MEK 1/2 Antibody**Catalog #: LAN2010**

This product is sold only for research use by qualified laboratory personnel, and is not to be used as a drug, medical device, food additive, cosmetic, nor household chemical. It is not to be used in diagnostic, therapeutic, consumer, agricultural, nor pesticidal applications.

Manufacturer's Name: ImmuneChem Pharmaceuticals Inc.
Street Address: #253-5489 Byrne Road
City, Prov. Postal Code: Burnaby, BC, V5J 3J1
Fax: 604-431-6425
EMERGENCY PHONE: 604-453-0169

Article 2 - Hazardous Ingredients

NOT AVAILABLE. We are not aware of any hazards associated with this product or its ingredients, but the chemical, physical, and toxicological properties of this product have not been investigated thoroughly. Observe normal laboratory precautions.

Article 3 - Physical Data

Transparent liquid

Article 4 - Fire and Explosion Hazard

NOT APPLICABLE

Article 5 - Reactivity Data

- Chemical Stability: Stable under recommended storage conditions.
 - Conditions to avoid: Light.
 - Materials to Avoid: Strong oxidizing agents.
 - Hazardous Products: Formed under fire conditions – Carbon oxides, Hydrogen bromide gas.
-

Article 6 – Toxicologically Data

May be harmful by inhalation, ingestion, or skin absorption. The toxicological properties of this product have not been investigated thoroughly. Exercise due caution.

Article 7 - Preventative Measures

Wear chemical safety goggles and compatible chemical-resistant gloves. Avoid inhalation, contact with eyes, skin or clothing.

*****MULTIPLE COMPONENT SPILL OR LEAK PROCEDURES*****

- Wear protective equipment.
 - Absorb on sand or vermiculite and place in closed containers for disposal.
 - Observe all federal, state and local environmental regulations.
-

Article 8 - First Aid Measures

- If swallowed, wash out mouth with water, provided person is conscious. Call a physician.
 - In case of skin contact, flush with copious amounts of water for at least 15 minutes. Remove contaminated clothing and shoes. If a rash or other irritation develops, call a physician.
 - If inhaled, remove to fresh air. If breathing becomes difficult, call a physician.
 - In case of eye contact, flush with copious amounts of water for at least 15 minutes while separating the eyelids with fingers. Call a physician.
-

Article 9 - Preparation

Prepared By: Hao Xiao

Phone #: 1-604-431-6425

The above information is believed to be correct but does not purport to be all-inclusive and shall be used only as a guide. ImmuneChem shall not be held liable for any damage resulting from handling or from contact with the above product. See the Technical Specification, Packing Slip, Invoice, and Product Catalogue for additional terms and conditions of sale.

For in vitro research use only. Not recommended or intended for diagnosis of diseases in humans or animals. Do not use in humans or in animals.

T: 604-431-6425 F: 604-453-0169 orders@immunechem.com www.immunechem.com



Unit#253 5489 Byrne Rd.
Burnaby BC Canada
V5J 3J1
Orders@immunechem.com
www.immunechem.com

MEK 1/2 Antibody

Catalog #: LAN2010

For in vitro research use only. Not recommended or intended for diagnosis of diseases in humans or animals. Do not use in humans or in animals.

T: 604-431-6425 F: 604-453-0169 orders@immunechem.com www.immunechem.com