

His-Tag Antibody, HRP

Product Description

This high affinity His-tag antibody HRP conjugate is developed using a polyhistidine peptide (HHHHHH) conjugated to KLH and affinity-purified with the HHHHHH peptide. The antibody is directly conjugated to peroxidase (HRP) and is useful for detection and localization of His-tag proteins.

Species

Rabbit

Formulation

250 µg/mL in PBS, 50% glycerol

Storage & Stability

Product is stable for several weeks at 4°C. For extended storage, store product at -20°C. Expiration date is six months from date of shipping if properly stored.

Immunogen

Polyhistidine peptide (HHHHHH) KLH conjugates

Purification

Antigen-specific affinity chromatography

Specificity

The antibody recognizes His-tag proteins.

Applications

ELISA (1:2500)

WB (0.25-1.0 µg/mL)

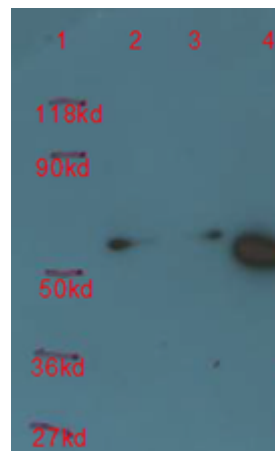
IHC (5 µg/mL)

Scientific Description

Polyhistidine peptide is frequently used as an affinity tag to facilitate the isolation of the 6H-fusion proteins using a metal-chelate matrix.

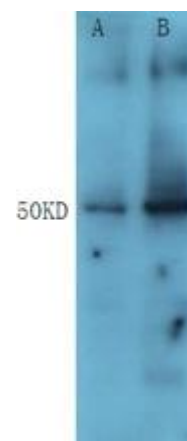
Catalog #: ICP0851

Sample Data



Western-blot with His-tag antibody, HRP (ICP0851) of the His-tag protein (50 kDa) expressed cell lysate and enriched His-tag protein by IP with anti-His-tag (ICP0850)

- 1: Molecular marker
- 2: 10 µL of His-tag protein in lysate (original cell lysate)
- 3: 10 µL of His-tag protein in lysate (after IP)
- 4: 10 µL of the His-tag protein in 100 µL of the IP eluting buffer, enriched with 25 µg of the anti-His tag (ICP0850) from 2 mL of the original lysate



- A: 5 µg of His-tag fusion protein (50 kDa)
B: 20 µg His-tag fusion protein (50 kDa)

MATERIAL SAFETY DATA SHEET

Article 1 - Product Identification and Use

Product Name: His-Tag Antibody, HRP

Catalog #: ICP0851

This product is sold only for research use by qualified laboratory personnel, and is not to be used as a drug, medical device, food additive, cosmetic, nor household chemical. It is not to be used in diagnostic, therapeutic, consumer, agricultural, nor pesticidal applications.

Manufacturer's Name: ImmuneChem Pharmaceuticals Inc.
Street Address: #253-5489 Byrne Road
City, Prov. Postal Code: Burnaby, BC, V5J 3J1
Fax: 604-431-6425
EMERGENCY PHONE: 604-453-0169

Article 2 - Hazardous Ingredients

NOT AVAILABLE. We are not aware of any hazards associated with this product or its ingredients, but the chemical, physical, and toxicological properties of this product have not been investigated thoroughly. Observe normal laboratory precautions.

Article 3 - Physical Data

Transparent liquid.

Article 4 - Fire and Explosion Hazard

NOT APPLICABLE

Article 5 - Reactivity Data

- Chemical Stability: Stable under recommended storage conditions.
 - Conditions to avoid: Light.
 - Materials to Avoid: Strong oxidizing agents.
 - Hazardous Products: Formed under fire conditions – Carbon oxides, Hydrogen bromide gas.
-

Article 6 – Toxicologically Data

May be harmful by inhalation, ingestion, or skin absorption. The toxicological properties of this product have not been investigated thoroughly. Exercise due caution.

Article 7 - Preventative Measures

Wear chemical safety goggles and compatible chemical-resistant gloves. Avoid inhalation, contact with eyes, skin or clothing.

*****MULTIPLE COMPONENT SPILL OR LEAK PROCEDURES*****

- Wear protective equipment.
 - Absorb on sand or vermiculite and place in closed containers for disposal.
 - Observe all federal, state and local environmental regulations.
-

Article 8 - First Aid Measures

- If swallowed, wash out mouth with water, provided person is conscious. Call a physician.
 - In case of skin contact, flush with copious amounts of water for at least 15 minutes. Remove contaminated clothing and shoes. If a rash or other irritation develops, call a physician.
 - If inhaled, remove to fresh air. If breathing becomes difficult, call a physician.
 - In case of eye contact, flush with copious amounts of water for at least 15 minutes while separating the eyelids with fingers. Call a physician.
-

Article 9 - Preparation

Prepared By: Hao Xiao

Phone #: 1-604-431-6425

The above information is believed to be correct but does not purport to be all-inclusive and shall be used only as a guide. ImmuneChem shall not be held liable for any damage resulting from handling or from contact with the above product. See the Technical Specification, Packing Slip, Invoice, and Product Catalogue for additional terms and conditions of sale.

For in vitro research use only. Not recommended or intended for diagnosis of diseases in humans or animals. Do not use in humans or in animals.

T: 604-431-6425 F: 604-453-0169 orders@immunechem.com www.immunechem.com