

p42 MAPK (ERK2) Antibody

Product Description

Affinity purified rabbit polyclonal anti-p42 MAPK antibodies are developed with the C-terminal peptide of human MAPK (ERK2).

Species

Rabbit

Formulation

250 µg/mL in TBS, 50% glycerol, 0.01% NaN₃

Storage & Stability

Product is stable for several weeks at 4°C. For extended storage, store product at -20°C. Expiration date is one year from date of shipping if properly stored.

Immunogen

Human p42 ERK2 C-terminal peptide-KLH conjugates

Purification

The antibody is affinity purified with the p42 ERK2 C-terminal peptide on agarose.

Specificity

The antibody recognizes human, rat, bovine, mouse and rabbit p42 ERK2. It does not cross-react with p44 ERK1.

Applications

ELISA

WB

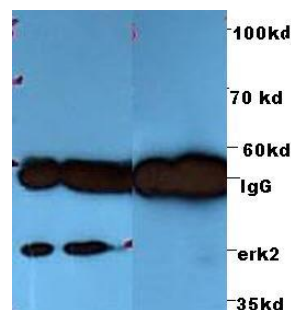
IP

Scientific Description

Maturation of mitogen-activated protein kinase (MAPK), also known as extracellular signal regulated kinase 2 (ERK2), is involved in the eukaryotic signalling process. [1] It is activated by a dual phosphorylation on threonine and tyrosine residues by the dual-specificity kinase MKK1/2. After stimulation, ERK2 p42 translocates to the nucleus. [2] Once phosphorylated, ERK2 can form dimers with phosphorylated and unphosphorylated ERK2 partners. ERK2 can also phosphorylate many substrates, for instance EGFR, c-PLA2, Elk1/TCF and c-Myc. [3-5]

Catalog #: ICP0205

Sample Data



Western blot analysis of mouse brain and spleen samples immunoprecipitated with anti-ERK2 antibody: left two lanes with ERK 2 and right two lanes with pre-immune serum.

References

1. Cobb, M. H. *et al. J. Cell Regul.* **1991**, *2*, 965-978.
2. Chen, R. H. *Mol. Cell Biol.* **1992**, *12*, 915-927.
3. Northwood, I. C. *J Biol Chem.* **1991**, *266*, 15266-15276.
4. Lin, L. *et al. Cell* **1993**, *72*, 269-278.
5. Seth, A. *et al. J Biol. Chem.* *1992*, *267*, 24796-24804.

MATERIAL SAFETY DATA SHEET

Article 1 - Product Identification and Use

Product Name: p42 MAPK (ERK2) Antibody

Catalog #: ICP0205

This product is sold only for research use by qualified laboratory personnel, and is not to be used as a drug, medical device, food additive, cosmetic, nor household chemical. It is not to be used in diagnostic, therapeutic, consumer, agricultural, nor pesticidal applications.

Manufacturer's Name: ImmuneChem Pharmaceuticals Inc.
Street Address: #253-5489 Byrne Road
City, Prov. Postal Code: Burnaby, BC, V5J 3J1
Fax: 604-431-6425
EMERGENCY PHONE: 604-453-0169

Article 2 - Hazardous Ingredients

NOT AVAILABLE. We are not aware of any hazards associated with this product or its ingredients, but the chemical, physical, and toxicological properties of this product have not been investigated thoroughly. Observe normal laboratory precautions.

Article 3 - Physical Data

Transparent liquid.

Article 4 - Fire and Explosion Hazard

NOT APPLICABLE

Article 5 - Reactivity Data

- Chemical Stability: Stable under recommended storage conditions.
 - Conditions to avoid: Light.
 - Materials to Avoid: Strong oxidizing agents.
 - Hazardous Products: Formed under fire conditions – Carbon oxides, Hydrogen bromide gas.
-

Article 6 – Toxicologically Data

May be harmful by inhalation, ingestion, or skin absorption. The toxicological properties of this product have not been investigated thoroughly. Exercise due caution.

Article 7 - Preventative Measures

Wear chemical safety goggles and compatible chemical-resistant gloves. Avoid inhalation, contact with eyes, skin or clothing.

*****MULTIPLE COMPONENT SPILL OR LEAK PROCEDURES*****

- Wear protective equipment.
 - Absorb on sand or vermiculite and place in closed containers for disposal.
 - Observe all federal, state and local environmental regulations.
-

Article 8 - First Aid Measures

- If swallowed, wash out mouth with water, provided person is conscious. Call a physician.
 - In case of skin contact, flush with copious amounts of water for at least 15 minutes. Remove contaminated clothing and shoes. If a rash or other irritation develops, call a physician.
 - If inhaled, remove to fresh air. If breathing becomes difficult, call a physician.
 - In case of eye contact, flush with copious amounts of water for at least 15 minutes while separating the eyelids with fingers. Call a physician.
-

Article 9 - Preparation

Prepared By: Hao Xiao

Phone #: 1-604-431-6425

The above information is believed to be correct but does not purport to be all-inclusive and shall be used only as a guide. ImmuneChem shall not be held liable for any damage resulting from handling or from contact with the above product. See the Technical Specification, Packing Slip, Invoice, and Product Catalogue for additional terms and conditions of sale.

For in vitro research use only. Not recommended or intended for diagnosis of diseases in humans or animals. Do not use in humans or in animals.

T: 604-431-6425 ☐ F: 604-453-0169 ☐ orders@immunechem.com ☐ www.immunechem.com



Unit#253 5489 Byrne Rd.
Burnaby BC Canada
V5J 3J1
Orders@immunechem.com
www.immunechem.com

p42 MAPK (ERK2) Antibody

Catalog #: ICP0205

For in vitro research use only. Not recommended or intended for diagnosis of diseases in humans or animals. Do not use in humans or in animals.

T: 604-431-6425 F: 604-453-0169 orders@immunechem.com www.immunechem.com