

Trimethyl Lysine Antibody Pan Specific, FITC

Product Description

This rabbit polyclonal antibody is raised with a chemically methylated protein antigen. The specific anti-tri-methyl-lysine antibody was affinity purified with trimethylated lysine antibodies and affinity adsorbed with N-(epsilon) mono- and di-methylated lysine. The purified anti-trimethyl-lysine antibody was labeled with FITC. The antibody could be utilized for detection and localization of proteins with N-trimethylated lysine residues.

Formulation

250 µg/mL in PBS with 50% glycerol

Storage & Stability

Product is stable for several weeks at 4°C. For extended storage, store product at -20°C. Expiration date is six months from date of shipping if properly stored.

Immunogen

Methylated KLH conjugates

Purification

The antibody was purified on N (epsilon) tri-methyl lysine agarose and absorbed by mono- and di-methyl lysine.

Conjugation

Flourescein 5(6) isothionate; FITC/Ab molar ratio - >20:1

Specificity

The antibody recognizes proteins with trimethylation on their lysine residues (N-epsilon). There are no cross reactions with acetylated proteins or mono- and di-methylated proteins.

Species Tested

Human and mouse

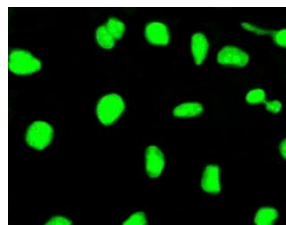
Applications

IF

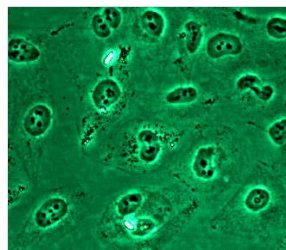
Catalog #: ICP0603

Trimethylation of the epsilon amino group of lysine residues in proteins is one of the most important events of post-translational modification.

Sample Data



Immunofluorescent staining of paraformaldehyde fixed human melanoma cells (MMRU) with ICP0603 (5 µg/mL in PBSt, 3% BSA, r.t, 30 min)



Scientific Description

For in vitro research use only. Not recommended or intended for diagnosis of diseases in humans or animals. Do not use in humans or in animals.

MATERIAL SAFETY DATA SHEET

Article 1 - Product Identification and Use

Product Name: Trimethyl Lysine Antibody Pan Specific, FITC

Catalog #: ICP0603

This product is sold only for research use by qualified laboratory personnel, and is not to be used as a drug, medical device, food additive, cosmetic, nor household chemical. It is not to be used in diagnostic, therapeutic, consumer, agricultural, nor pesticidal applications.

Manufacturer's Name: ImmuneChem Pharmaceuticals Inc.
Street Address: #253-5489 Byrne Road
City, Prov. Postal Code: Burnaby, BC, V5J 3J1
Fax: 604-431-6425
EMERGENCY PHONE: 604-453-0169

Article 2 - Hazardous Ingredients

NOT AVAILABLE. We are not aware of any hazards associated with this product or its ingredients, but the chemical, physical, and toxicological properties of this product have not been investigated thoroughly. Observe normal laboratory precautions.

Article 3 - Physical Data

Transparent liquid.

Article 4 - Fire and Explosion Hazard

NOT APPLICABLE

Article 5 - Reactivity Data

- Chemical Stability: Stable under recommended storage conditions.
 - Conditions to avoid: Light.
 - Materials to Avoid: Strong oxidizing agents.
 - Hazardous Products: Formed under fire conditions – Carbon oxides, Hydrogen bromide gas.
-

Article 6 – Toxicologically Data

May be harmful by inhalation, ingestion, or skin absorption. The toxicological properties of this product have not been investigated thoroughly. Exercise due caution.

Article 7 - Preventative Measures

Wear chemical safety goggles and compatible chemical-resistant gloves. Avoid inhalation, contact with eyes, skin or clothing.

*****MULTIPLE COMPONENT SPILL OR LEAK PROCEDURES*****

- Wear protective equipment.
 - Absorb on sand or vermiculite and place in closed containers for disposal.
 - Observe all federal, state and local environmental regulations.
-

Article 8 - First Aid Measures

- If swallowed, wash out mouth with water, provided person is conscious. Call a physician.
 - In case of skin contact, flush with copious amounts of water for at least 15 minutes. Remove contaminated clothing and shoes. If a rash or other irritation develops, call a physician.
 - If inhaled, remove to fresh air. If breathing becomes difficult, call a physician.
 - In case of eye contact, flush with copious amounts of water for at least 15 minutes while separating the eyelids with fingers. Call a physician.
-

Article 9 - Preparation

Prepared By: Hao Xiao

Phone #: 1-604-431-6425

The above information is believed to be correct but does not purport to be all-inclusive and shall be used only as a guide. ImmuneChem shall not be held liable for any damage resulting from handling or from contact with the above product. See the Technical Specification, Packing Slip, Invoice, and Product Catalogue for additional terms and conditions of sale.

For in vitro research use only. Not recommended or intended for diagnosis of diseases in humans or animals. Do not use in humans or in animals.

T: 604-431-6425 ☐ F: 604-453-0169 ☐ orders@immunechem.com ☐ www.immunechem.com