

## Methyl ( $\epsilon$ -N) Lysine Antibody

---

### Product Description

The affinity purified rabbit polyclonal anti-methylated lysine antibody was developed using a technique unique to ImmuneChem. The methylated lysine antibodies are affinity purified using N-methyl (epsilon amino group) lysine on agarose as the affinity matrix. The antibodies could be utilized for detection, quantization and isolation of proteins with methylated lysine residues.

### Species

Rabbit

### Formulation

250  $\mu$ g/mL in Tris-phosphate buffer, 50% glycerol

### Storage & Stability

Product is stable for several weeks at 4°C. For extended storage, store product at -20°C. Expiration date is one year from date of shipping if properly stored.

### Immunogen

Methylated KLH conjugates

### Purification

The antibody was immunoaffinity purified with epsilon N-methyl lysine on agarose.

### Specificity

The antibody recognizes proteins or peptides methylated on lysine residues (mono, di-methyllysine). There are no cross reactions with acetylated proteins. The cross reactivity with trimethyl lysine has not been tested.

### Applications

ELISA  
WB  
IHC

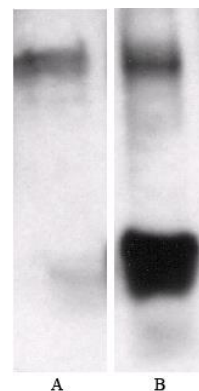
## Catalog #: ICP0501

---

### Scientific Description

MeK is a conserved post-translational modification and is an important biochemical process for many protein-protein interactions. It is found in many proteins, for example calmodulin, cytochrome C, chromosomal proteins, histones and non-histones as well as neural storage body proteins. It has been suggested that methylation of lysine plays an important role in gene silencing. <sup>[1-3]</sup>

### Sample Data



Western blot analysis of the methylated histone from melanoma cells with anti-methylated lysine anti-MeK (ICP0501). Histones were isolated with cold 0.1M HCl extraction followed by:  
A: Blot with 0.5  $\mu$ g/mL of anti-MeK (ICP0501) in TBSt and blocked with synthetic methylated BSA 100  $\mu$ g/mL  
B: Blot with 0.5  $\mu$ g/mL of anti-MeK (ICP0501) in TBSt

### References

1. Im, H. et al. *J. Biol. Chem.* **2003**, 278, 18346-18352.
2. Ng, H. H. et al. *J. Biol. Chem.* **2002**, 277, 34655-34657.
3. Zegerman, P. et al. *J. Biol. Chem.* **2002**, 277, 11621-11624

# MATERIAL SAFETY DATA SHEET

---

## Article 1 - Product Identification and Use

---

**Product Name: Methyl ( $\epsilon$ -N) Lysine Antibody****Catalog #: ICP0501**

*This product is sold only for research use by qualified laboratory personnel, and is not to be used as a drug, medical device, food additive, cosmetic, nor household chemical. It is not to be used in diagnostic, therapeutic, consumer, agricultural, nor pesticidal applications.*

Manufacturer's Name: ImmuneChem Pharmaceuticals Inc.  
Street Address: #253-5489 Byrne Road  
City, Prov. Postal Code: Burnaby, BC, V5J 3J1  
Fax: 604-431-6425  
EMERGENCY PHONE: 604-453-0169

---

## Article 2 - Hazardous Ingredients

---

NOT AVAILABLE. We are not aware of any hazards associated with this product or its ingredients, but the chemical, physical, and toxicological properties of this product have not been investigated thoroughly. Observe normal laboratory precautions.

---

## Article 3 - Physical Data

---

Transparent liquid.

---

## Article 4 - Fire and Explosion Hazard

---

NOT APPLICABLE

---

## Article 5 - Reactivity Data

---

- Chemical Stability: Stable under recommended storage conditions.
  - Conditions to avoid: Light.
  - Materials to Avoid: Strong oxidizing agents.
  - Hazardous Products: Formed under fire conditions – Carbon oxides, Hydrogen bromide gas.
- 

## Article 6 – Toxicologically Data

---

May be harmful by inhalation, ingestion, or skin absorption. The toxicological properties of this product have not been investigated thoroughly. Exercise due caution.

---

## Article 7 - Preventative Measures

---

Wear chemical safety goggles and compatible chemical-resistant gloves. Avoid inhalation, contact with eyes, skin or clothing.

\*\*\*\*\*MULTIPLE COMPONENT SPILL OR LEAK PROCEDURES\*\*\*\*\*

- Wear protective equipment.
  - Absorb on sand or vermiculite and place in closed containers for disposal.
  - Observe all federal, state and local environmental regulations.
- 

## Article 8 - First Aid Measures

---

- If swallowed, wash out mouth with water, provided person is conscious. Call a physician.
  - In case of skin contact, flush with copious amounts of water for at least 15 minutes. Remove contaminated clothing and shoes. If a rash or other irritation develops, call a physician.
  - If inhaled, remove to fresh air. If breathing becomes difficult, call a physician.
  - In case of eye contact, flush with copious amounts of water for at least 15 minutes while separating the eyelids with fingers. Call a physician.
- 

## Article 9 - Preparation

---

Prepared By: Hao Xiao

Phone #: 1-604-431-6425

The above information is believed to be correct but does not purport to be all-inclusive and shall be used only as a guide. ImmuneChem shall not be held liable for any damage resulting from handling or from contact with the above product. See the Technical Specification, Packing Slip, Invoice, and Product Catalogue for additional terms and conditions of sale.

For in vitro research use only. Not recommended or intended for diagnosis of diseases in humans or animals. Do not use in humans or in animals.

T: 604-431-6425        F: 604-453-0169        orders@immunechem.com        www.immunechem.com